

# Faculty Senate Committee Handbook 2010-2011

Descriptions and Memberships of Senate, College, and District Committees  
with Faculty Representatives

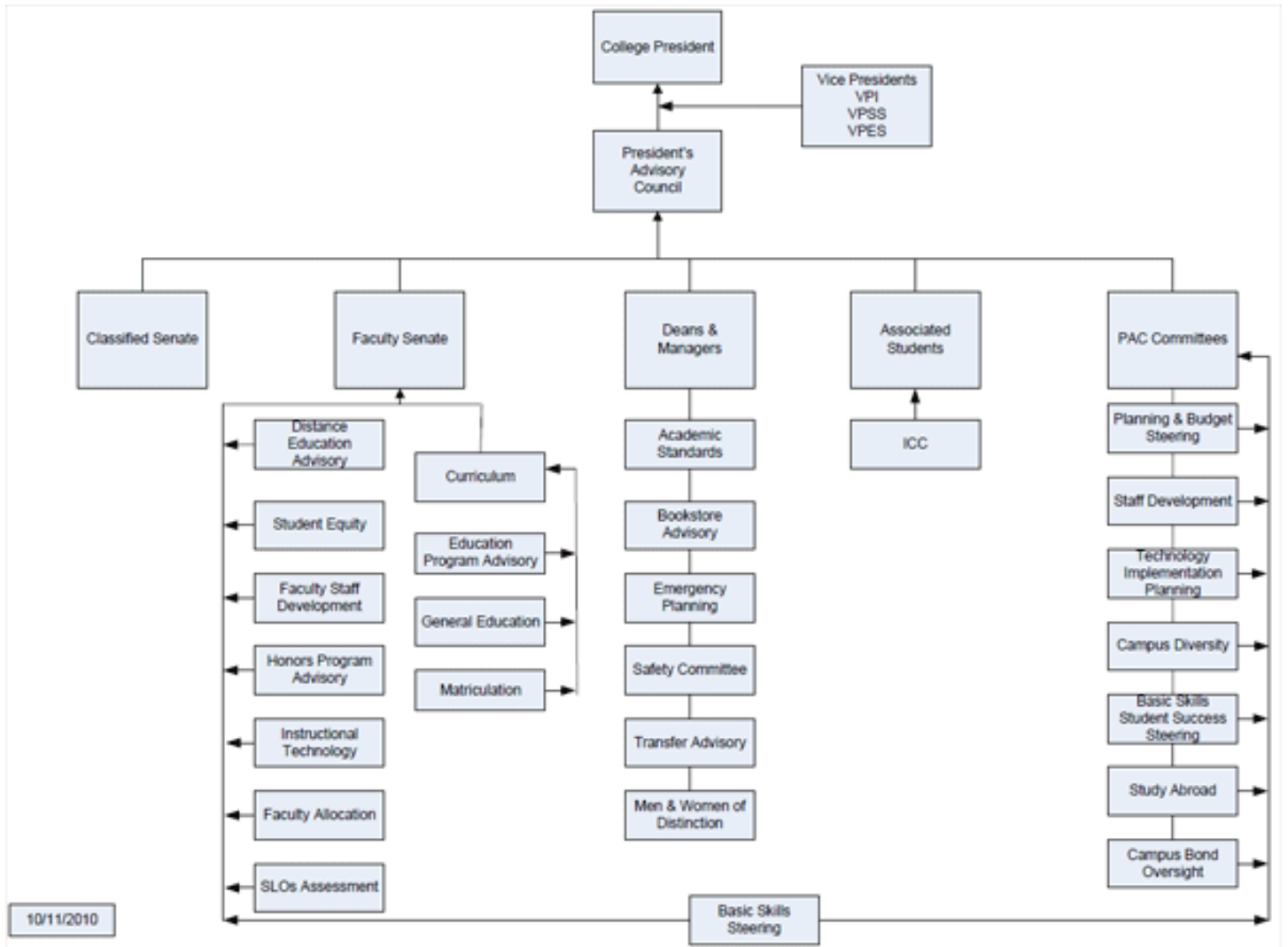


Updated by Sean Chamberlin, [schamberlin@fullcoll.edu](mailto:schamberlin@fullcoll.edu)  
November 4, 2010

# ***Table of Contents***

<b>FC Committees Org Chart.....</b>	<b>3</b>
<b>Faculty Senate Committees.....</b>	<b>4</b>
Distance Education Advisory Committee .....	4
Student Equity Committee .....	5
Honors Program Advisory Committee .....	6
Instructional Technology Committee .....	7
Faculty Allocation Committee .....	8
Curriculum Committee .....	9
Education Program Advisory Committee .....	10
General Education Advisory Committee .....	11
Matriculation Committee .....	12
Basic Skills Student Success Steering Committee .....	13
<b>Campus Committees with Faculty Reps.....</b>	<b>14</b>
Campus Diversity Committee .....	14
President’s Advisory Council .....	15
Budget Development Committee.....	16
Staff Development Committee.....	17
Technology Implementation Planning Committee .....	18
Study Abroad Committee .....	19
Campus Bond Oversight Committee.....	20
<b>Deans and Managers Committees with Faculty Reps .....</b>	<b>21</b>
Bookstore Advisory Committee .....	21
Men and Women of Distinction Committee .....	22
Transfer Advisory Committee .....	23
<b>District Committees with Faculty Reps.....</b>	<b>24</b>
Chancellor’s Cabinet .....	24
District Planning Council .....	25
District Curriculum Coordinating Committee.....	27
District-Wide Staff Development Committee .....	28
Professional Growth & Development Committee (PG & D) .....	29
Equivalency Committee .....	30
District Equal Employment Opportunity Advisory Committee.....	31
District Technology Advisory Committee.....	32

# FC Committees Org Chart



## Faculty Senate Committees

### ***Distance Education Advisory Committee***

Formed in 2000 as a campus-level committee to provide advisement to the college governance council, the Distance Education Advisory Committee (DEAC) coordinates the use of instructional technology and the delivery of instruction and student services at a distance; designs and develops training curriculum; and oversees the training of faculty. Among the issues relating to technology that the committee may address are curriculum development, staff development, student services, counseling, media production and administration. In 2008-2009 DEAC reporting was changed from the college governance council (President's Advisory Council) to the Faculty Senate, which then forwards DEAC issues to the college governance council.

#### ***Chair***

Elected by and from the voting committee members for a two-year term.

#### ***Meetings***

First Thursday of the month at 1:30 p.m.; also the third Thursday of the month as needed.

#### ***Composition***

5 Faculty Senate Representatives

3 Management Representatives

Dean of Academic Services

Instructional Dean

Student Services Dean

1 Classified Staff Representative

1 Associated Students Representative

<b><i>Voting Members Name</i></b>		
Callista Lee (Chair)	2010-2012	Faculty Senate – Social Science
Ricardo Salas	2009-2011	Faculty Senate – Social Science
Dave Brown	2010-2012	Faculty Senate – Library Faculty
Elise Donley	2010-2012	Senate – Math/Computer Science
Nancy Woolridge	2010-2012	Faculty Senate – Business/CIS
Carol Mattson		Management-Dean, Academic Services
Dan Tesar		Management-Instructional Dean
Albert Abutin		Management-Student Services
Linda Clark		Dean Classified Staff
TBD		Associated Students
<b><i>Resource Members</i></b>		
Nilo Niccolai		Academic Computing Technology
Tania McKeown		Disability Support Services
Scott McKenzie		Interim Vice President
Alix Plum-Widner		Instruction Staff Development
Terry Gleason		Coordinator Distance Education

## Student Equity Committee

The Student Equity Committee develops and recommends policies, programs and strategies that promote equity in student success, retention, degree/certificate completion and transfer as outlined in the Fullerton College Student Equity Plan.

### **Chair**

Elected by and from the voting committee members.

### **Meetings**

Second and fourth Thursdays of the month from 1:00-2:00 pm in Room 1415-0 (Fall 2010)

### **Composition**

6 Faculty Senate Representatives, 2 Management Representatives, 1 Classified Representative, 2 Associated Students Representatives

<b><i>Voting Members Name</i></b>	<b><i>Term (if applicable)</i></b>	<b><i>Group</i></b>
Chris Lamm (Chair)	2010-2012	Faculty Senate – Social Science
Sean Chamberlin	2010-2012	Faculty Senate – Natural Science
Carolyn Facer	2010-2012	Faculty Senate – Math/Computer Science
Adela Lopez	2010-2012	Faculty Senate – Social Science
Jose Miranda	2010-2012	Faculty Senate – Tech & Engineering
Stewart Kimura	2010-2012	Faculty Senate – Counseling
Mark Greenhalgh		Management
Pilar Ellis		Management
Chuck Helms		Classified Staff
TBD		Associated Students
TBD		Associated Students

## Honors Program Advisory Committee

Formed in 1996 as a campus-level committee to provide advisement to the Faculty Senate, the Honors Program Advisory Committee oversees the activities of the Fullerton College Honors Program; works with Deans to select faculty teaching honors courses and to schedule honors classes; screens students participating in the Honors Program; develops visiting lecturer and similar programs; develops additional honors courses; certifies transfer honors students to four-year institutions; and develops and monitors honors membership and transfer contacts.

### Meetings

Once a month on a Wednesday at 12 p.m.

### Chair

Designated as Honors Program Coordinator and selected by the Faculty Senate for a two-year term.

<b><i>Voting Members Name</i></b>	<b><i>Term (if applicable)</i></b>	<b><i>Group</i></b>
Bob Lundergan (Coordinator)	2010-2012	Faculty Senate – Humanities
Linda Kelly-Mandich	2010-2012	Faculty Senate – Counseling
Annie Liu	2010-2012	Faculty Senate – Humanities
Cindy Zarske	2010-2012	Faculty Senate – Mathematics
Bruce Henderson	2010-2012	Faculty Senate – Humanities
Lynne Negus	2010-2012	Faculty Senate – Social Science
Lina Callahan	2009-2011	Faculty Senate – Humanities
Jodi Balma	2009-2011	Faculty Senate – Social Science
Bruce Hanson	2010-2012	Faculty Senate – Social Science
Scott Malloy	2010-2012	Faculty Senate – Mathematics
Liz Kiszely	2010-2012	Faculty Senate – Humanities
<b><i>Resource Members</i></b>		
Dan Tesar		Management
Scott Lee		Articulation Officer
Lily Espinoza		Transfer Center
Cynthia Wafer		Special Programs
Honors Intern		Special Programs

## **Instructional Technology Committee**

The Educational Technology Committee (ETC), a campus-level committee to provide advisement to the Planning and Consultative Council, was established in 2000. In 2006 by mutual agreement with the College President, the ETC was split into the Instructional Technology Committee (ITC) and the Distance Education Advisory Committee (DEAC). In May 2009 the President's Advisory Council approved the new committee structure including the Instructional Technology Committee, Distance Education Advisory Committee and Technology Implementation Committee.

The Instructional Technology Committee (ITC) is a policy recommending committee of the Faculty Senate and makes recommendations on the use of instructional technology and related policies for the delivery of instruction. Among the issues relating to technology that the committee may address are developing an instructional technology plan, budget and administrative and support structure

### ***Chair***

Elected by and from the voting committee members for a two-year term.

### ***Meetings***

First and Third Thursdays of the month from 2:00-3:00 p.m.

### ***Composition***

11 Faculty\*\* One from each Instructional Division One from Counseling/Student Services One from Library/Learning Resources One from the Distance Education Advisory Committee (DEAC) \*\*Vacancies shall be filled with an at-large position for one year.

<b><i>Voting Members Name</i></b>	<b><i>Term (if applicable)</i></b>	<b><i>Group</i></b>
Dale Craig	2009-2011	Business/CIS
Markus Burger	2009-2011	Fine Arts
Richard Smead	2009-2011	At-Large
Dana Clahane	2010-2012	Math/Computer Science
Ben Crowell	2010-2012	Natural Science
Nora Spencer	2010-2012	Business/CIS
Vacant	2009-2011	
Jose Miranda	2010-2012	Technology & Engineering
Lynette Pratt	2009-2011	Counseling/Student Services
Erica Bennett	2009-2011	Library/Learning Resources
Carl Stanaway	2010-2012	Fine Arts

## Faculty Allocation Committee

The purpose of the Faculty Allocation Committee is to prioritize faculty hires according to campus-wide needs. When new positions are allocated, this committee will review the requests of all divisions submitted to the committee by the Deans' Council and will submit a prioritized list to the President.

### **Chair**

Elected by and from the voting committee members for a two-year term.

### **Meetings**

On an as-needed basis. This committee will meet when the President makes a request of the Faculty Senate President to convene the committee. The committee may also be asked to meet with the President when the President requires additional input from the committee concerning the committee's decisions.

### **Composition**

11 Faculty Senate Representatives – One from each Division

<b>Voting Members Name</b>	<b>Term (if applicable)</b>	<b>Group</b>
Vacant	2010-2012	Faculty Senate - Student Services
Sunshine Vidal	2010-2012	Faculty Senate – Counseling
Tim Byrnes	2010-2012	Faculty Senate – PE
Vacant	2010-2012	Faculty Senate - Social Science
Dale Craig	2010-2012	Faculty Senate - Business & CIS
Carolyn Heath	2010-2012	Faculty Senate - Natural Sciences
Elise Donley	2010-2012	Faculty Senate - Math & Comp Science
Jane Isibashi	2010-2012	Faculty Senate - Library
Carol Ward	2010-2012	Faculty Senate - Technology & Engr
Lina Callahan	2010-2012	Faculty Senate – Humanities
Jaime Perez	2010-2012	Faculty Senate - Fine Arts



## Curriculum Committee

Reorganized in 1990 as a campus-level committee to provide advisement to the Faculty Senate and the District Curriculum Coordinating Committee, the Curriculum Committee gives faculty, through their Division representatives, the responsibility for curriculum development and approval, as well as general education and graduation requirements. The committee reviews, approves and/or disapproves modifications of existing curricula and adds new curricula and programs on campus. In addition, the committee adds, deletes and modifies curricula and approves courses for general education lists for California State University, University of California, Intersegmental General Education Transfer Curriculum and Fullerton College associate of arts and associate of sciences degrees.

### Chair

Elected by the Faculty Senate for a two-year term.

### Meetings

First and Third Wednesday of the month at 1:30 p.m.

### Composition

12 Faculty Senate Representatives Curriculum Committee Chair (non-voting) One faculty from each Division.

<b>Voting Members Name</b>	<b>Term (if applicable)</b>	
Jennifer Combs (Chair) – non-voting		
Kelly Nelson Wright	2010-2013	Senate - Social Sciences
VACANT		Senate - Student Services
Jay Seidel	2010-2012	Senate - Technology & Engr
Kathy Standen	2009-2012	Senate - Business & CIS
VACANT		Senate - Counseling
John Ison	2009-2012	Senate – Humanities
Cindy Zarske	2010-2013	Senate - Math & Comp Science
Brad Dawson	2010-2013	Senate - Natural Sciences
Nick Fuscardo (F)/Brian Cooks (S)	2010-2013	Senate - Physical Education
Jim Dowdalls	2009-2012	Senate - Fine Arts
Jill Okamura	2009-2012	Senate - Library
<b>Resource Members</b>		
Scott McKenzie		Interim Vice President, Instruction
Carol Mattson		Management/Dean, Academic Services
Scott McKenzie		Management/Dean, Technology & Engr
Scott Lee		Articulation Officer
Stewart Kimura		Matriculation Officer
Nicol Tushla		Classified Staff/Admissions & Records
Laurie Triefenbach		Classified Staff/Catalog & Schedule
Rachel Chavez		Curriculum Recorder
TBD		Associated Students Representative

## Education Program Advisory Committee

Formed in 2004 the Education Program Advisory Committee provides general oversight of teacher preparation activities; assists faculty in the development of curriculum; recommends required and elective courses for the Education AA Degree; works with Deans to select faculty teaching program courses and to schedule program classes; identifies the needs of new and continuing students; and facilitates communication across the divisions.

### Meetings

First Tuesday of the month at 3:15 p.m.

### Composition

12 Faculty Senate Representatives (including one Counselor) 1 Management Representative

<b><i>Voting Members Name</i></b>	<b><i>Term (if applicable)</i></b>	<b><i>Group</i></b>
VACANT		Senate
VACANT		Senate
VACANT		Senate
Lupe Casillas	2010-2012	Senate - Counseling
Annie Bianchino	2008-2011	Senate - Natural Sciences
Jan Chadwick	2010-2012	Senate - Natural Sciences
Sharon DeLeon	2008-2011	Senate – Social Sciences
Brandon Floerke	2008-2011	Senate – Humanities
Heather Halverson	2008-2011	Senate – Counseling
Diana Kyle	2009-2011	Senate - Social Sciences
Stephanie Piazza	2008-2011	Senate – Humanities
Jose Miranda	2010-2012	Senate – Tech & Engineering
Dan Tesar		Management Representative
<b><i>Resource Members</i></b>		
Karen Rose		Office of Special Programs – Center for Careers in Education
TBD		Associated Students

## **General Education Advisory Committee**

A subcommittee of the Curriculum Committee, the General Education Advisory Committee monitors the General Education List and makes recommendations to the Curriculum Committee for possible changes. The Curriculum Committee then acts on the recommendations. General Education additions, revision and deletions remain the purview of the Curriculum Committee.

### **Meetings**

Twice a year or as needed; the Committee will report to the Curriculum Committee each year before April 1.

### **Composition**

4 Faculty Senate Representatives (including one Counselor), two voting members of the Curriculum Committee recommended to the Faculty Senate, and two at-large, and the Articulation Officer

<b><i>Voting Members Name</i></b>	<b><i>Term (if applicable)</i></b>	<b><i>Group</i></b>
Jennifer Combs	2007-2009	Faculty Senate/Curriculum Chair
Greg Nguyen	2007-2010	Counseling
Susan Vincent	2010-2012	Faculty Senate/Curriculum Committee
Karen Markley	2010-2012	Faculty Senate/Social Science
Scott Lee	2008-2010	Articulation Officer
<b><i>Resource Members</i></b>		
Carol Mattson		Management/Dean, Academic Services
Stewart Kimura		Matriculation Officer
TBD		Associated Students Representative

## Matriculation Committee

The Matriculation Committee was formed to provide faculty input concerning the implementation of matriculation guidelines from the Department of Education. The Matriculation Committee provides advisement to college administration on matriculation issues and makes decision on the implementation of matriculation guidelines from the California Department of Education. The committee makes decisions and advises on issues such as the waivers of course prerequisites, mandatory versus advisory placement testing and changes in the new student orientation evaluations.

### Chair

Designated as the Matriculation Coordinator.

### Meetings

As need on Thursdays at 1:30 p.m.

### Composition

5 Faculty Senate Representatives 1 each from ESL, Reading, Basic Skills, English 1 At-Large, 4 Counselors, 4 Management Representatives, 1 Classified Staff Representative, 1 Associated Students Representative

<b><i>Voting Members Name</i></b>	<b><i>Term (if applicable)</i></b>	<b><i>Group</i></b>
Stewart Kimura (Chair)	2008-2011	Matriculation Coordinator
Kathi Johnson	2009-2011	Faculty Senate – ESL
Angela Henderson	2009-2011	Faculty Senate – Reading
Brandon Floerke	2009-2011	Faculty Senate – English
Amy Garcia	2009-2011	Faculty Senate - Basic Skills
TBD	TBD	Faculty Senate - At-Large Counseling
Sunshine Vidal		Counseling
Karyn Nguyen		Counseling
Vy Do		Counseling
Robert Jaurequi	2009-2011	Counseling
Paul McKinley		Management/Disability Support Services
Lisa Campbell		Management/Dean, Counseling
Albert Abutin		Management/Dean, Admissions
Ginny Sanchez		EOPS
Greg Menchaca		Classified Staff
<b><i>Resource Members</i></b>		
Scott Lee		Articulation Officer

## Basic Skills Student Success Steering Committee

Begun as the Basic Skills Task Force in spring 2007, the committee was renamed the Basic Skills Student Success Steering Committee (BSSSSC) in fall 2007. The BSSSSC was created by mutual agreement between the President and the Faculty Senate to oversee the implementation on campus of the statewide Basic Skills Initiative (BSI) which provides a budget and regional support system for improving student success in ESL and the basic skills areas of Math, Reading and Writing. The BSSSC recommends how to disseminate BSI funds most effectively to impact student success in these basic skills areas and works to coordinate instructional, Academic Support and Student Services efforts. The committee's mission also includes increasing campus awareness of and commitment to student success in basic skills. The committee reports to the Faculty Senate and the President's Advisory Council.

### Chair

Co-Chairs (one faculty and one manager) elected by and from the voting committee members.

### Meetings

First Friday of the month from 10:00 a.m. to 12:00 p.m.

### Composition

7 Faculty Representatives (one each from Counseling, Career Technical Education, ESL, English, Math, Reading and At-Large), 6 Management Representatives (from Academic Support, Student Services and Basic Skills related areas) 3 Classified Staff Representatives (from Academic Support Center or Math Lab) 1 Student Representative

<b>Voting Members Name</b>	<b>Term (if applicable)</b>	<b>Group</b>
Jeanne Costello	2009-2011	Faculty – English
Amy Garcia	2009-2011	Faculty – Reading
Stewart Kimura	2009-2011	Faculty – Counseling
Chris Lamm	2009-2011	Faculty – At-Large
Gayle Cebrian	2010-2012	Faculty – Career Technical Education
Deborah McQueen	2010-2012	Faculty – Math
Ellen Rosen	2010-2012	Faculty – ESL
Dan Willoughby	2009-2011	Dean, Humanities
Mark Greenhalgh	2009-2011	Dean, Math & Computer Science
Jackie Boll	2009-2011	Dean, Library/Learning Resource Center
Lisa Campbell		Dean, Counseling
Olivia Veloz		Director, Academic Support Center
Dani McLean		Special Projects Director, Basic Skills
Deb Perkins		Classified - Tutoring Center Coordinator
Gail Knife Chief		Classified – Math Lab
Linda Millikan		Classified – Academic Support Center
TBD		Student Representative
<b>Resource Members</b>		
Scott McKenzie		Interim Vice President, Instruction
Toni DuBois		Vice President, Student Services
Adam O'Connor		Budget Officer
Ken Meehan		Institutional Researcher

## Campus Committees with Faculty Reps

### Campus Diversity Committee

Originally formed in 2001 as the Fullerton College Equity and Diversity Committee, the name was changed to the Fullerton College Diversity Committee in 2009. The mission of the Diversity Committee is to plan and develop activities with the purpose of promoting harmony, equality and unity through a greater understanding of diversity. The committee promotes and protects the interests and concerns of minority and underrepresented persons, which includes persons designated as a protected class by the California Education Code. The committee actively promotes and advocates for a positive, supportive and safe campus climate and advocates for and plans activities that promote student equity. To support its mission and purpose, the committee creates and recommends campus activities that educate, engage and challenge students, faculty, staff and administrators to celebrate and acknowledge the importance of diversity within the campus and society. The committee actively seeks assistance and resources from within and outside the campus community. The Campus Diversity Committee provides advice and recommendations to the College President on related issues.

#### Chair

Elected by and from the voting committee members for a two-year term.

#### Meetings

First Wednesday of the month at 3:00 p.m.

#### Composition

2 Faculty Senate Representatives 2 Management Representatives 2 Classified Staff Representatives 1 Associated Students Representative 1 Associated Student Inter-Club Council Representative 1 Black Faculty and Staff Association Representative, 1 Disability Support Services Representative 1 Gay and Lesbian Association of District Employees Representative 1 Latino Faculty and Staff Association Representative

<b><i>Voting Members Name</i></b>	<b><i>Term (if applicable)</i></b>	<b><i>Group</i></b>
Lily Espinoza (Chair – 2009-2011)	2010-2012	Management
Vacant	2009-2011	Faculty Senate
Kim Orlijan	2010-2012	Faculty Senate – Humanities
Olivia Veloz	2009-2012	Management
Vacant		Classified Staff
Josue Abarca		Classified Staff
TBD		Associated Students
TBD		Associated Students – ICC
Andre Strong		Black Faculty and Staff Association
Paul McKinley		Disability Support Services
Vince White		Gay & Lesbian Assoc. Dist. Employees
Bob Miranda		Latino Faculty and Staff Association

## President's Advisory Council

The President's Advisory Council (PAC) serves as the central, participatory governance council, functioning as the institution's primary recommending body for decision-making and planning. The structure and nature of the President's Advisory Council is to facilitate its interactions with all institutional constituencies. The planning role is enhanced by its familiarity with all functions of the college, ensuring both a knowledgeable and integrated perspective.

Specialized projects are referred by the Council to other governance organizations for review, such as the Faculty Senate and Deans' Council for instructional matters, the Classified Senate for classified issues and the Associated Students for student issues. These bodies report back to the Council with recommendations. For most issues, the determination of the President's Advisory Council is final. In some instances, however, in which district-wide concurrence is necessary, the individual groups also make recommendations to their counterparts within the broader District. The College President is charged with representing Council determinations to the Chancellor, the Chancellor's Cabinet and the Board of Trustees.

### **Chair**

Designed as the College President.

### **Meetings**

Second and fourth Wednesdays of the month at 2:00 p.m.

### **Composition**

College President – non-voting 4 Faculty Senate Representatives 2 Management Representatives 2 Classified Staff Representatives 2 Associated Students Representatives

<b><i>Voting Members Name</i></b>	<b><i>Term (if applicable)</i></b>	<b><i>Group</i></b>
Rajen Vurdien (Chair) – non-voting		
Marcus Wilson	2008-2012	Faculty Senate – Business/CIS
Sean Chamberlin	2009-2014	Faculty Senate – Natural Science
Markus Burger	2010-2012	Faculty Senate – Fine Arts
Jim Book	2010-2012	Faculty Senate – Fine Arts
Lisa Campbell		Management/Deans' Council
Chris Kiger		Management
TBD		Classified Staff
TBD		Classified Staff
TBD		Associated Students
TBD		Associated Students
<b><i>Resource Members</i></b>		
Scott McKenzie		Interim Vice President Instruction
Toni DuBois		Vice President Student Services
Larry Mercadante		Interim VP, Educational Support
Adam O'Connor		Budget Officer
Andrea Hanstein		Public Information Officer
Ken Meehan		College Researcher

## Planning and Budgeting Steering Committee

Formed in fall 2010 to replace the Budget Development Committee, the purpose of the Planning and Budget Steering Committee is to develop and propose changes to the campus budget and make recommendations on other fiscal issues including one-time and ongoing budget requests and requests for emergency funding. The Planning and Budget Steering Committee also develops operational strategies or action plans to meet the college goals and recommends a budget to implement them. The college goals are forwarded to the Planning and Budget Steering Committee from the Program Review Committee after endorsement by the President's Advisory Council and approval by the College President. The Planning and Budget Steering Committee reports to the President's Advisory Council.

### **Chair**

Designated as the College Director of Budget and Finance

### **Meetings**

First and third Wednesdays of the month at 2:00 p.m.

### **Composition**

Director of Budget and Finance 2 Faculty Senate Representatives 2 Management Representatives 2 Classified Staff Representatives 2 Associated Students Representatives

<b><i>Voting Members Name</i></b>	<b><i>Term (if applicable)</i></b>	<b><i>Group</i></b>
Adam O'Connor (Chair)	2008-2010	
Marcus Wilson	2008-2010	Faculty Senate – Business/CIS
Sean Chamberlin	2010-2012	Faculty Senate – Natural Science
Dan Willoughby	2008-2010	Management
Cyndi Grein		Management
Chrystal Van Beynan		Classified Staff
Sharon Kelly		Classified Staff
TBD		Associated Students
TBD		Associated Students
<b><i>Resource Members</i></b>		
Sandy March, Recorder		



## Staff Development Committee

Formed in 1983 as a campus-level committee to provide advisement to the college governance council, the Staff Development Committee oversees campus-wide staff development activities. In addition, the Committee determines campus staff development policies; provides oversight to and facilitates the utilization of the Teaching Effectiveness Center; determines staff development priorities and provides materials and workshops based on survey results; determines programs and workshops for funding; disseminates Staff Development funds; and communicates regularly with constituent groups.

### Chair

Designated as the Staff Development Coordinator and appointed by the Faculty Senate

### Meetings

Second and fourth Mondays of the month at 2:00 p.m.

### Composition

8 Faculty Senate Representatives 3 Management Representatives 2 Classified Staff Representatives

<b>Voting Members Name</b>	<b>Term (if applicable)</b>	<b>Group</b>
Nancy Ikeda (Chair)	2010-2012	Faculty Senate– Math/CIS
Celia Assef	2009-2011	Faculty Senate– Tech & Engineering
Liz Kiszley	2010-2012	Faculty Senate - Humanities
Mareike Claassen	2010-2012	Faculty Senate– Math/Computer Science
Sandro Corsi	2010-2012	Faculty Senate– Fine Arts
Adela Lopez	2010-2012	Faculty Senate– Social Science
VACANT	2010-2012	Faculty Senate
Ricardo Salas	2010-2012	Faculty Senate– Social Science
Chris Kiger		Management
Carol Mattson		Management
Olivia Veloz		Management
Catherine Parks		Classified Staff
Wendy Bailey		Classified Staff
<b>Resource Members</b>		
Terry Gleason		Distance Education
Dani McLean		Basic Skills Coordinator
Dawnmarie Neate		Academic Computing

## Technology Implementation Planning Committee

The Educational Technology Committee (ETC), a campus level committee to provide advisement to the Planning and Consultative Council, was established in 2000. In 2006, by mutual agreement with the College President and Faculty Senate, the ETC was split into the Instructional Technology Committee (ITC) and the Distance Education Advisory Committee (DEAC). In May 2009 the President's Advisory Council approved the new committee structure including the Instructional Technology Committee, Distance Education Advisory Committee and Technology Implementation Planning Committee (TIPC).

The Instructional Technology Committee (ITC) and the Distance Education Advisory Committee (DEAC) are policy recommending committees of the Faculty Senate. The ITC makes recommendations on the use of instructional technology and related policies for the delivery of instruction. Among the issues relating to technology that the committee may address are developing an instructional technology plan, budget, and administrative and support structure. At the direction of PAC the Technology Implementation Planning Committee (ITPC) is charged with implementing the policies and recommendations of the ITC and DEAC. The TIPC shall also solicit proposals and recommendations for PAC to consider from representatives of non-academic areas relating to their use of technology.

The Technology Implementation Planning Committee will: (1) address technology and infrastructure issues; (2) coordinate the implementation and support of the technology needs of the campus, the Educational Master Plan and related Strategic Instructional Technology and Student Services Plans; (3) oversee the implementation of the technology infrastructure necessary for the efficient instructional use of technology; (4) gather information needs and concerns; (5) promote effective and efficient use of technology; (6) develop technological partnership among campus programs and departments; (7) avoid unnecessary technological duplication; (8) recommend priorities for the non-academic use of technology on campus based on administrative needs and incorporate academic technology priorities as recommended by the Instructional Technology Committee; (9) in cooperation with the ITC and DEAC identify, prioritize and recommend staffing for technology; (10) develop an ongoing comprehensive College Technology Plan for consideration by PAC; (11) recommend funding strategies and priorities for major technology spending to the PAC; and (12) receive regular reports from the District Information Technology Committee and review and respond as appropriate. Committee membership is predicated on intimate use of technology and skills, knowledge, desire and commitment to assist the college in achieving a model technology environment in support of its goals.

### **Chair**

Elected by and from the voting members for a two year term

### **Meetings**

Once a month, to be determined by committee members. Additional meetings at the discretion of the committee as needed.

### **Composition**

4 Faculty (one from Business/CIS, one from Fine Arts and two At-Large – one of the above must teach an online class) 4 Managers 1 Classified Representative, 1 Associated Students Representative

<b>Voting Members Name</b>	<b>Term (if applicable)</b>	<b>Group</b>
Richard Smead		Faculty Senate – Business/CIS
TBD		Faculty Senate – Fine Arts
Dale Craig		Faculty Senate – At-Large
Diana Kyle		Faculty Senate – At-Large
Nilo Niccolai		Management/Dir.of Academic Computing
Ann Hovey		Management/Dean
Carol Mattson		Management/Dean
Albert Abutin		Management/President's Appointee
Corrine McKinley		Classified Representative
Jay Bills		Associated Students Representative

## Study Abroad Committee

Formed in 1985 as a district-level committee to provide advisement to the Administrator-in-Charge, the Study Abroad Committee promotes the Study Abroad Program by making a judicious selection of an instructor, assisting in the recruitment and selection of students and selecting appropriate sites in various countries. The Committee includes Cypress College faculty but is administered by a Fullerton College faculty coordinator.

### **Chair**

Designated as the Study Abroad Coordinator and appointed by the Faculty Senate.

### **Meetings**

A minimum of two or three meetings each semester.

### **Composition**

6 Fullerton College Faculty Senate Representatives 3 Cypress College Faculty Representatives 1 Management Representative

<b><i>Voting Members Name</i></b>	<b><i>Term (if applicable)</i></b>	<b><i>Group</i></b>
LeVonne Nelson, Chair	2009-2011	FC Faculty Senate – Social Science
Arlene Jacobsen	2009-2011	FC Faculty Senate – Math/Computer Science
John Orr	2009-2011	FC Faculty Senate – Humanities
Kelly Klassen	2010-2012	FC Faculty Senate – Math/Computer Science
Doug Eisner	2010-2012	FC Faculty Senate – Humanities
Claudia Lowe	2010-2012	FC Faculty – Social Sciences
Stuart Rosenberg		CC Faculty
Kathleen McAlister		CC Faculty
Kathryn Sonne		CC Faculty
Jackie Boll		Management
<b><i>Resource Members</i></b>		
Scott McKenzie		Interim FC Vice President of Instruction
Joyce Carrigan		CC Dean, Fine Arts

## **Campus Bond Oversight Committee**

Formed in spring 2005 to provide advisement and recommendations to the President, the Campus Bond Oversight Committee is designed to have all constituencies be involved and have input and access to information that pertains to the design of the campus bond projects.

### **Chair**

Designated as the Vice President of Educational Support.

### **Meetings**

As needed during the academic year.

### **Composition**

3 Faculty Senate Representatives 3 Management Representatives 2 Classified Staff Representatives 1 Associated Students Representative

<b><i>Voting Members Name</i></b>	<b><i>Term (if applicable)</i></b>	<b><i>Group</i></b>
Larry Mercadante (Chair)		Management
Bruce Cordell		Management
VACANT		Management
Tim Byrnes	2010-2012	Faculty Senate – Tech & Engineering
Rebecca Morgan	2008-2010	Faculty Senate – Physical Education
Dale Craig	2010-2012	Faculty Senate – Business/CIS
Pat Sanchez	2008-2010	Classified Staff
April Ramos	2008-2010	Classified Staff
TBD	2008-2010	Associated Students

## Deans and Managers Committees with Faculty Reps

### Bookstore Advisory Committee

The purpose of the Bookstore Advisory Committee is to discuss bookstore issues as they relate to the campus community, with a primary focus on textbook issues.

#### **Chair**

Designated as the Director of the Bookstore.

#### **Meetings**

Two times each semester and once in the summer, if needed

#### **Composition**

2 Faculty Senate Representatives 2 Management Representatives 2 Classified Staff Representatives 2 Associated Students Representatives

<b><i>Voting Members Name</i></b>	<b><i>Term (if applicable)</i></b>	<b><i>Group</i></b>
Nick Karvia (Chair)		Management
Vacant		Faculty Senate
Carl Stanaway		Faculty Senate – Fine Arts
Cyndi Grein		Management
Mary Frances Giacalone		Classified Staff
Tania McKeown		Classified Staff
TBD		Associated Students
TBD		Associated Students

## Men and Women of Distinction Committee

Originally formed in 1957 for Men of Distinction (Mu Omicron Delta Honor Society) and 1959 for Women of Distinction (Alpha Gamma Eta Honor Society), the Men and Women of Distinction Committee was reconstituted in 1986 as a combined campus level committee to provide advisement to the Director of Student Affairs. The Men and Women of Distinction Committee reviews and rates applications of qualified candidates, selecting up to 15 male and 15 female students who have made outstanding achievements in their educational and civic pursuits. The committee also selects one male student as Fullerton College Man of the Year and one female student as Fullerton College Woman of the Year.

### Chair

Designated as the Director of Student Affairs.

### Meetings

One to two meetings per year in late fall/early spring and time to rate applications.

### Composition

13 Faculty Senate Representatives One faculty from each Division

Two faculty At-Large, 1 Non-voting Faculty Association Representative, 1 United Faculty Association Rep, 2 Classified Staff Representatives, 1 Student Support Services Representative, 2 Associated Students Representatives, 1 Hornet Student Representative

<b>Voting Members Name</b>	<b>Term (if applicable)</b>	<b>Group</b>
Darlene Jensen (Chair), Non-voting		Director of Student Affairs
TBD	2010-2012	Faculty Senate – Academic Services
TBD	2010-2012	Faculty Senate – Business/CIS
TBD	2010-2012	Faculty Senate – Counseling
TBD	2010-2012	Faculty Senate – Fine Arts
TBD	2010-2012	Faculty Senate – Humanities
TBD	2010-2012	Faculty Senate – Library
TBD	2010-2012	Faculty Senate – Math/Comp Science
TBD	2010-2012	Faculty Senate – Natural Sciences
TBD	2010-2012	Faculty Senate – Physical Education
TBD	2010-2012	Faculty Senate – Social Science
TBD	2010-2012	Faculty Senate – Tech & Engineering
TBD	2010-2012	Faculty Senate – Physical Education
TBD	2010-2012	Faculty Senate – Humanities
Dolores Cornejo	2010-2012	Classified Staff
TBD	2010-2012	Classified Staff
TBD		Student Support Services
TBD		Associated Students
TBD		Associated Students
TBD		United Faculty
TBD		Hornet
Resource Members		
Les-Sie 'Crockrom	2010-2012	Faculty Association

## Transfer Advisory Committee

Formed in 1991 and reorganized in 1999 as a campus-level committee to provide advisement to the Transfer Center Director, the Transfer Advisory Committee makes recommendations on: the development and strengthening of campus-wide transfer activities; addressing institutional goals for transfer; strengthening the relationship between teaching, counseling and transfer; promoting intersegmental cooperation; fostering collaboration among faculty between institutions; facilitating the transfer of high school students to the university via the community college; coordinating publicity of transfer-related activities; constructing evaluation plans; and addressing state-wide policy issues and intersegmental discussions related to transfer.

### Chair

Designated as the Transfer Center Director.

### Meetings

Once a semester in December and April

### Composition

4 Faculty Senate Representatives 2 Counselors 2 Management Representatives 1 Classified Staff Representative 2 Associated Students Representatives 3 University Outreach Representatives 1 CSU Representative, 1 UC Representative 1 Independent University Representative Articulation Officer Transfer Center Director

<b>Voting Members Name</b>	<b>Term (if applicable)</b>	<b>Group</b>
Lily Espinoza (Chair)		Transfer Center Director/Management
Leonor Monreal	2009-2011	Faculty Senate – Social Science
Rolando Sanabria	2009-2011	Faculty Senate – Counseling
Anu Mande	2009-2011	Faculty Senate – Social Science
Jo Wen Wu	2009-2011	Faculty Senate – Natural Science
Sylvia Pimentel	2007-2009	Faculty Senate – Counseling
Susan Vincent	2007-2009	Faculty Senate – Counseling
Sunshine Vidal	2007-2009	Faculty Senate – Counseling
TBD		Management
John Abelon	2007-2009	Classified Staff
TBD		Associated Students
TBD		Associated Students
Larry Chapa		CSU
Vanessa Gonzalez		UC
Marcela Mejia-Martinez		Independent University
Scott Lee		Articulation Officer
<b>Resource Members</b>		
TBD		High School Representative
Bruce Hanson/Anu Mande		Honors Program Coordinator
Carol Shier		Transfer Achievement Program Coord
Ken Meehan		Institutional Researcher

## District Committees with Faculty Reps

### Chancellor's Cabinet

Formed as a district-level committee to provide advisement to the Chancellor, the Chancellor's Cabinet reviews and considers recommendations to initiate or modify district-wide policies and procedures, addresses district-wide issues, fosters and facilitates District communication and supports shared governance within the District.

#### Chair

Designed as the Chancellor.

#### Meetings

Second and fourth Mondays during the school term at 2:00 p.m.

#### Composition

Chancellor President, Cypress College President, Fullerton College Provost, School of Continuing Education (SCE) President, Academic Senate – Cypress College President, Faculty Senate – Fullerton College President, Academic Senate – School of Continuing Education (SCE) President, United Faculty President, Adjunct Faculty President, District Management Association (DMA) President, CSEA President, Confidential Group President, Associated Students – Cypress College President, Associated Students – Fullerton College Vice Chancellor, Human Resources (Chancellor appointed) Vice Chancellor, Finance and Facilities (Chancellor appointed) District Director, Information Services (Chancellor appointed) District Director, Public Affairs (Chancellor appointed)

<b><i>Voting Members Name</i></b>		<b><i>Group</i></b>
Ned Doffoney (Chair)		Chancellor
Mike Kasler		President – Cypress College
Rajen Vurdien		President – Fullerton College
Christine Terry		President – SCE
Pat Ganer		President, Academic Senate – CC
Marcus Wilson		Representative, Faculty Senate – FC
Candace Lynch-Thompson		President, Academic Senate – SCE
Fola Odebunmi		Representative, United Faculty
Sam Russo		President, Adjunct Faculty
Danielle Heinbuch		President, DMA
<b><i>Resource Members</i></b>		
Rod Lusch		President, CSEA
Debra Gerard		President, Confidential Group
Michael McCombs		President, Associated Students – CC
Johnwilly Osuji		President, Associated Students – FC
Jeff Horsley		Vice Chancellor, Human Resources
Fred Williams		Vice Chancellor, Finance and Facilities
Debbie Ludford		District Director, Information Services
<b><i>Non-Voting Members</i></b>		
Vacant		District Director, Public Affairs
<b><i>Resource Members</i></b>		
Violet Ayon, Recording Secretary		



## District Planning Council

Formed as a district-wide committee to provide advisement to the Chancellor and Board of Trustees, the District Planning Council develops recommendations regarding district-wide strategic planning and formation of the District budget. This purpose is adopted with the intent that the planning process drives the budgetary process.

### Chair

Designated as the Chancellor

### Meetings

Second and fourth Mondays during the school term at 2:00 p.m.

### Composition

Chancellor President, Cypress College President, Fullerton College Provost, School of Continuing Education (SCE) President, Academic Senate – Cypress College Representative, Academic Senate – Cypress College President, Faculty Senate – Fullerton College Representative, Faculty Senate – Fullerton College President, Academic Senate – School of Continuing Education (SCE) Representative, Academic Senate – School of Continuing Education (SCE) Executive Vice President, Cypress College Vice President Instruction, Fullerton College Dean Instruction/Student Services, SCE (Provost appointed) President, United Faculty Representative, United Faculty President, Adjunct Faculty Representative, Adjunct Faculty President, District Management Association (DMA) President, CSEA Representative, CSEA President, Confidential Group President, Associated Students – Cypress College President, Associated Students – Fullerton College Vice Chancellor, Human Resources (Chancellor appointed) Vice Chancellor, Finance and Facilities (Chancellor appointed) District Director, Information Services (Chancellor appointed) District Director, Public Affairs (Chancellor appointed) District Director, Fiscal Affairs Vice President Administrative Services, Cypress College (President appointed) Director of Institutional Research & Planning, Cypress College (President appointed) Vice President Student Services, Fullerton College (President appointed) Director Budget and Finance, Fullerton College (President appointed) Director Budget and Finance, SCE (Provost appointed)

<b>Voting Members Name</b>		<b>Group</b>
Ned Doffoney (Chair)		Chancellor
Mike Kasler		President – Cypress College
Rajen Vurdien		President – Fullerton College
Christine Terry		President – SCE
Pat Ganer		President, Academic Senate – CC
Rob Johnson		Representative, Academic Senate – CC
Marcus Wilson		President, Faculty Senate – FC
Sean Chamberlin		Representative, Academic Senate – FC
Candace Lynch-Thompson		President, Academic Senate – SCE
Tina McClurkin		Representative, Academic Senate – SCE
Bob Simpson		Executive Vice President – CC
Scott McKenzie		Interim Vice President Instruction – FC
Martha Gutierrez		Dean Instruction/Student Svcs – SCE
Fola Odebunmi		President, United Faculty
Les Doak		Representative, United Faculty
Sam Russo		President, Adjunct Faculty
TBD		Representative, Adjunct Faculty
Danielle Heinbuch		President, DMA
Rod Lusch		President, CSEA
Mary Molina		Representative, CSEA
Debra Gerard		President, Confidential Group
Michal McCombs		President, Associated Students – CC

Johnwilly Osjui		President, Associated Students – FC
Jeff Horsley		Vice Chancellor, Human Resources
Fred Williams		Vice Chancellor, Finance and Facilities
Debbie Ludford		District Director, Information Services
Karen Cant		Vice President Administrative Svcs – CC
Toni DuBois		Vice President Student Services – FC
<b>Non-Voting Members</b>		District Director, Fiscal Affairs
Claudette Dain		District Director, Public Affairs
Vacant		Dir. Institutional Research & Plng – CC
Santanu Bandyopadhyay		Director Budget and Finance – FC
Adam O'Connor		Director Budget and Finance – SCE
Terrie Taylor		District Director, Fiscal Affairs
<b>Resource Members</b>		
Violet Ayon, Recording Secretary		

## District Curriculum Coordinating Committee

Formed in 1991 to provide advisement to the Chancellor and Board of Trustees, the District Curriculum Coordinating Committee approves curriculum for Cypress College, Fullerton College and the School of Continuing Education before final approval by the Board of Trustees. The Committee coordinates curriculum district-wide, resolving any conflicts or inconsistencies; does curriculum planning; and interprets and implements Title 5 regulations. The Committee also approves new curriculum, revised curriculum and deleted curriculum proposed by Cypress College, Fullerton College and the School of Continuing Education and resolves articulation conflicts between Cypress College and Fullerton College.

### **Chair**

Designed as the Chancellor

### **Meetings**

First Friday of the month during the school term at 1:30 p.m.

### **Composition**

Chancellor 2 Cypress College Academic Senate Representatives 2 Fullerton College Faculty Senate Representatives 2 School of Continuing Education Academic Senate Representatives 6 Management Representatives

<b><i>Voting Members Name</i></b>		<b><i>Group</i></b>
Ned Doffoney (Chair)		Chancellor
Cherie Dickey		Cypress College Academic Senate
Stacey Howard		Cypress College Academic Senate
Jennifer Combs		Fullerton College Faculty Senate
Scott Lee		Fullerton College Faculty Senate
Marsha Elliott		SCE Academic Senate
Lee Clancy		SCE Academic Senate
Bob Simpson		Management – Cypress College
Scott McKenzie		Management – Fullerton College
Valentina Purtell		Management – SCE
<b><i>Non-Voting Members</i></b>		
Mike Kasler		Management – Cypress College
Scott McKenzie		Management – Fullerton College
Christine Terry		Management - SCE
<b><i>Resource Members</i></b>		
Pat Ganer		President, CC Academic Senate
Marcus Wilson		President, FC Faculty Senate
Candace Lynch-Thompson		President, SCE Academic Senate
Alba Topete		Recording Secretary

## **District-Wide Staff Development Committee**

The District-Wide Staff Development Committee coordinates district-wide staff development initiatives, identifies priorities for district-wide staff development programs and processes, implements tools to support staff development and advise the Chancellor on allocation of staff development resources.

### ***Chair***

Designated as the District Director, Equity & Diversity

### ***Meetings***

Second Tuesday of the month

### ***Composition***

District Director, Equity & Diversity Chair, CC Staff Development Committee Chair, FC Staff Development Committee Chair, SCE Staff Development Committee Chair, District Office Staff Development Committee DMA Representative

<b><i>Voting Members Name</i></b>		<b><i>Group</i></b>
Kenneth Robinson (Chair)		District Director, Equity & Diversity
Nancy Deutsch		CC Staff Development
Carol Mattson		FC Staff Development
Alix Plum Widner		FC Staff Development
Jorge Gamboa		SCE Staff Development
Gary Schneider		District Office Staff Development
Martha Gutierrez		DMA
<b><i>Resource Members</i></b>		
Angela Cotton		Support Staff

## **Professional Growth & Development Committee (PG & D)**

Formed in 1961 as a district-level committee to advise the Chancellor on the granting of sabbatical leaves, the Professional Growth and Development Committee reviews and recommends sabbatical proposals. The committee occasionally recommends contract revisions regarding Professional Growth and Development issues to the negotiating team.

### **Chair**

Designated as the District Director, Human Resources

### **Meetings**

One meeting at the beginning of the spring semester and take-home reading of the sabbatical leave proposals. Participation in proposal writing workshop in the fall semester.

### **Composition**

3 Cypress College Academic Senate Representatives 3 Fullerton College Faculty Senate Representatives 1 School of Continuing Education Academic Senate Representative

<b><i>Voting Members Name</i></b>	<b><i>Term (if applicable)</i></b>	<b><i>Group</i></b>
Steve Duncan (Chair)		District Director, Human Resources
Janet Fujimoto		Cypress College
Daniel Pelletier		Cypress College
Beth Piburn		Cypress College
Bruce Henderson	2010-2012	Fullerton College – Humanities
Patricia Thomas	2008-2010	Fullerton College – Humanities
Nora Spencer	2008-2010	Fullerton College – Business/CIS SCE
Eileen LaMorte		SCE

## **Equivalency Committee**

Formed in 1990 as a district-level committee to advise the Chancellor regarding the establishment of minimum qualifications, the Equivalency Committee addresses issues for new faculty hires or for current faculty seeking new faculty service areas.

### **Chair**

Designated as the District Director, Human Resources

### **Meetings**

As needed

### **Composition**

1 Cypress College Academic Senate Representative 1 Fullerton College Faculty Senate Representative 1 School of Continuing Education Academic Senate Representative 1 Management Representative

<b><i>Voting Members Name</i></b>		<b><i>Group</i></b>
Steve Duncan (Chair – non-voting)		
Robert Simpson		Management
Lisa Clark		Cypress College Academic Senate
Dale Craig		Fullerton College Faculty Senate – Business CIS
Eileen LaMorte		SCE Academic Senate
<b><i>Resource Members</i></b>		
TBD		Fullerton College
Valentina Purtell		SCE
Esther Saucedo		Support Staff

## District Equal Employment Opportunity Advisory Committee

The purpose of the District Equal Employment Opportunity Advisory Committee is to assist in developing and implementing the District's Equal Employment Opportunity Plan, help formulate and recommend activities to promote diversity, inclusion and multiculturalism throughout the District, and promote community relations in the area of diversity. The Committee acts in an advisory capacity to the Vice Chancellor of Human Resources.

### Chair

Designated at the District Director of Equity & Diversity

### Meetings

The District Equal Employment Opportunity Advisory Committee shall meet at least once each semester, with additional meetings if needed. Committee members will receive appropriate training on diversity, equity and equal opportunity employment.

### Composition

One faculty member from each campus diversity committee appointed by the respective academic senates  
 One classified employee from each campus diversity committee appointed by CSEA  
 One management employee from each campus diversity committee appointed by DMA  
 One confidential employee appointed by the Confidential Employee Group  
 One District Office employee appointed by the Chancellor  
 One student representative from each college appointed by the Associated Students  
 One student representative from SCE appointed by the SCE Academic Senate  
 Two community representatives with the district appointed by the Chancellor

<b>Voting Members Name</b>		<b>Group</b>
Kenneth Robinson (Chair)		District Director Equity & Diversity
Fernando Oliveira		Faculty – Cypress College
Diana Kyle		Faculty – Fullerton College
Juanita Giampiccolo		Faculty – SCE
Louella Nelson		Classified Staff – Cypress College
Josue Abarca		Classified Staff – Fullerton College
Deepali Dave		Classified Staff – SCE
Yongmi Han		Manager – Cypress College
Olivia Veloz		Manager – Fullerton College
Jorge Gamboa		Manager - SCE
Vickie McPherson		Confidential Employee Group
Violet Ayon		District Office Employee
Eddie Sanchez		Student – Cypress College
Johnwilly Osuji		Student – Fullerton College
Rosalba Bernal		Student – SCE
Flora Morris Brown, Ph.D.		Community Member
Alan Woo		Community Member

## ***District Technology Advisory Committee***

Established in spring 2010, the District Technology Advisory Committee reports to the District Planning Council and is composed of constituent group representatives, each of whom work with technology on a regular basis. The District Technology Advisory Committee is charged with making recommendations to the District Planning Council regarding policy and planning matters relating to the effective and efficient use of information technology to meet the needs of the students and staff district-wide. The committee is also charged with the task of developing a District Technology Master Plan.

### ***Chair***

Designated as the District Director, Information Services

### ***Meetings***

To be determined

### ***Composition***

District Director, Information Services 2 reps – Fullerton College Faculty Senate 2 reps – Cypress College Academic Senate 2 reps – SCE Academic Senate United Faculty representative District Management Association representative  
 Confidentials Group representative Cypress College appointee Fullerton College appointee Cypress College ACT Director Fullerton College ACT Director SCE ACT Director

<b><i>Voting Members Name</i></b>		<b><i>Group</i></b>
Deborah Ludford, Chair		District Director, Information Services
Dale Craig		Fullerton College Faculty Senate
Richard Smead		Fullerton College Faculty Senate
Michael Johnson		Cypress College Academic Senate
Gary Zager		Cypress College Academic Senate
Elvis Sersea		SCE Academic Senate
TBD		SCE Academic Senate
Fola Odebunmi		United Faculty
Beverly Pipkin		CSEA
Michael Land		CSEA
Peter Teipe		CSEA
Albert Abutin		District Management Association
Angela Cotton		Confidentials Group
Gilbert Contreras		Cypress College President Appointee
Ann Hovey		Fullerton College President Appointee
Beverly Heasley		SCE Provost Appointee
Danial Shakari		Cypress College Associated Students
TBD		Fullerton College Associated Students
Mike Kavanaugh		ACT Director, Cypress College
Co Ho		ACT Director, Fullerton College
Fred Rocha		ACT Director, SCE
<b><i>Resource Members</i></b>		
Tom Wallace		Technical Support Manager
Bob Hughes		ApplicationsSupport Manager